






### 8 Mertell Drive EDMONDSON PARK NSW

4  2  2 

Boasting ample space this masterpiece offers a comfortable living environment. This impressive family home offers multiple family living and entertaining areas.

An exceptional floorplan to allow the family live a lifestyle they would seek to start with a growing family. Nestled on a 493sqm allotment and only a short distance to Edmondson park amenities, new schools and attractions such as the proposed shopping centre, Edmondson park train station, Costco, M5/M7 gateways, this location couldn't get any convenient.

The 33 square double storey residence offers:

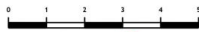
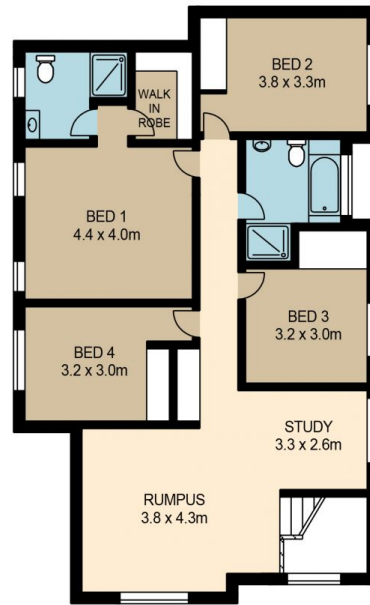
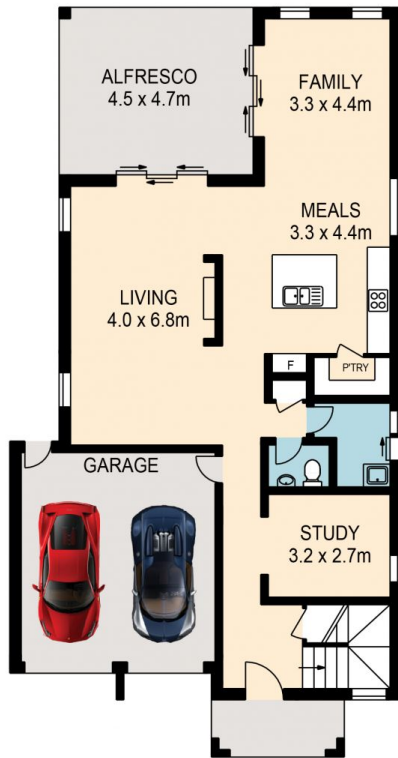
~ 4 spacious bedrooms with ensuite to the main and

**Price** : \$ 910,000  
**Building Size** : 33 sqm  
**Land Size** : 493 sqm  
**View** : <https://www.assetpropertyagents.com.au/sale/nsw/liverpool-fairfield/edmondson-park/residential/house/5540353>



**Sam Nahlous**  
**(02)87100338**

8 MERTELL DRIVE, EDMONDSON PARK



Asset  
Photographers  
www.assetphotographers.com.au

Please note these measurements are approximate only. The plans is intended as a rough guide for illustrative purpose. It is not warranted or guaranteed to be correct nor it is part of the sale or rental contract

